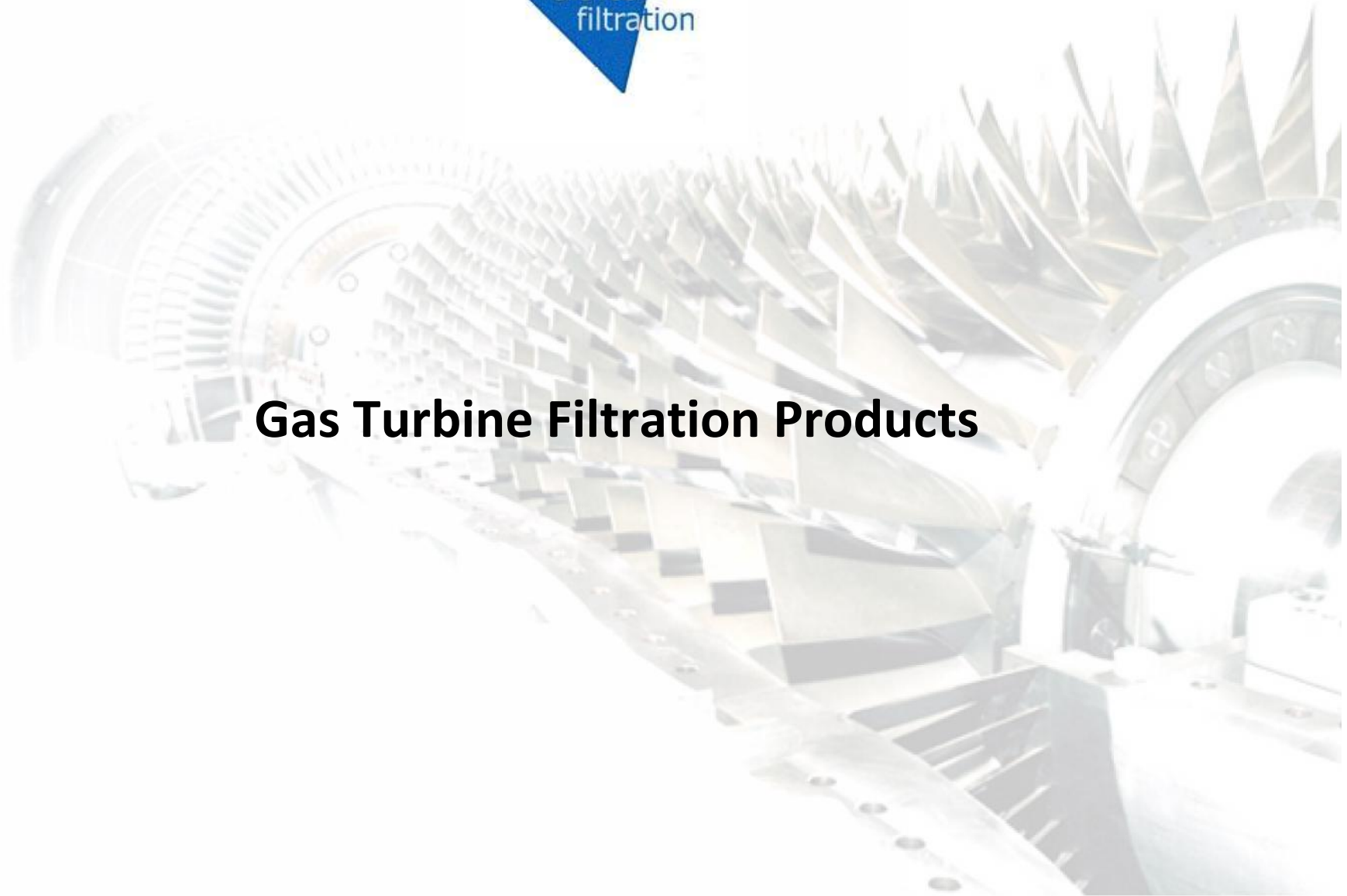
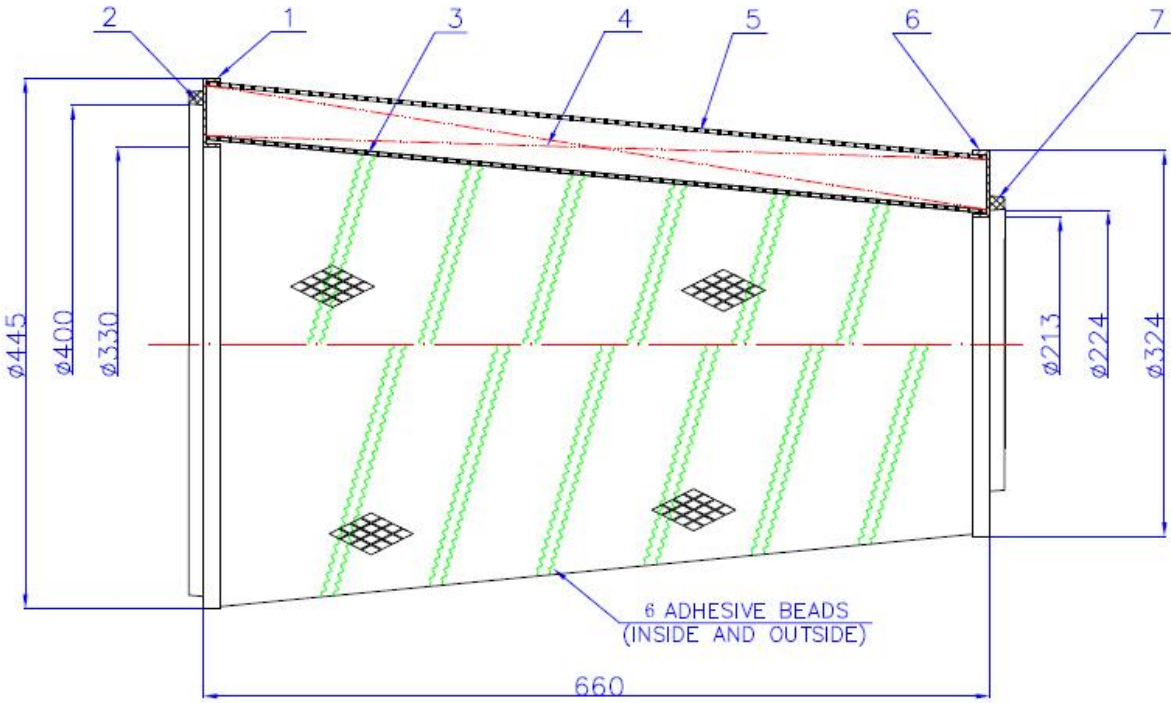




Gas Turbine Filtration Products

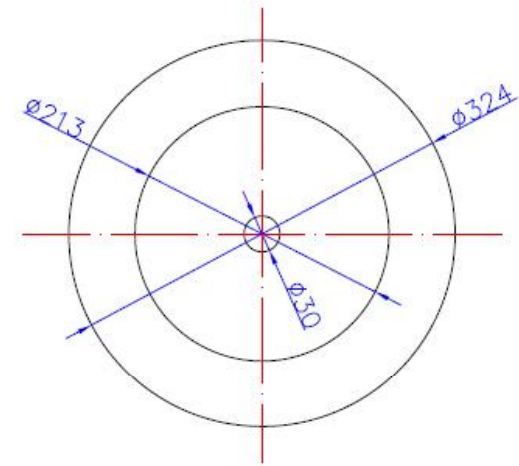
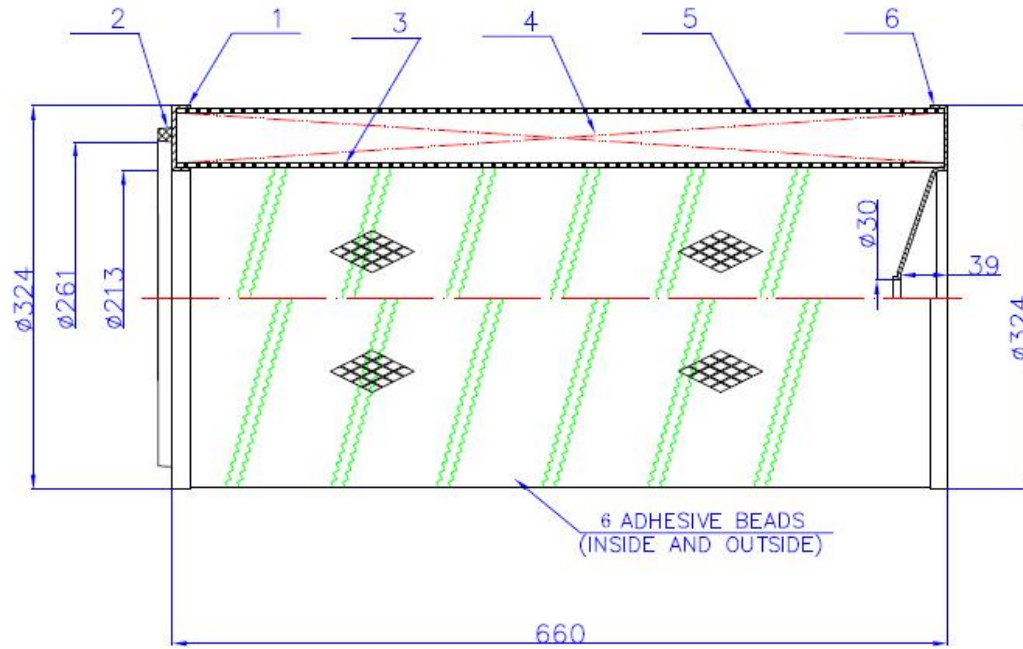


Conical Cartridge Filter



NO.	Name	Qty	Material	Remark
7	Gasket	1	Rubber/Neoprene	
6	Bottom end cap	1	Galvanized plate	
5	Outer cage	1	Galvanized rhombus mesh	
4	Filter media	1	Nanoweb	Filtration area 23m ²
3	Inner cage	1	Galvanized rhombus mesh	
2	Gasket	1	Rubber/Neoprene	
1	Top end cap	1	Galvanized plate	

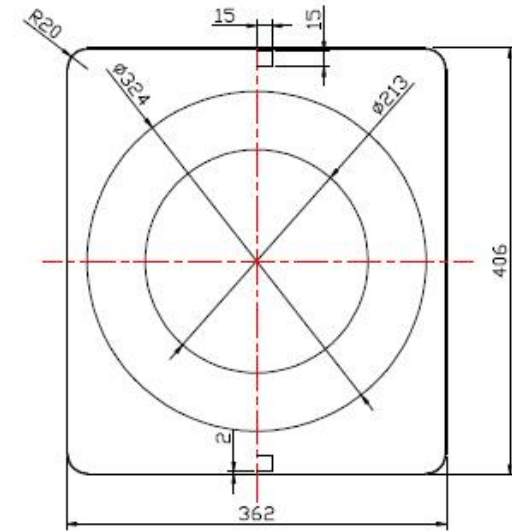
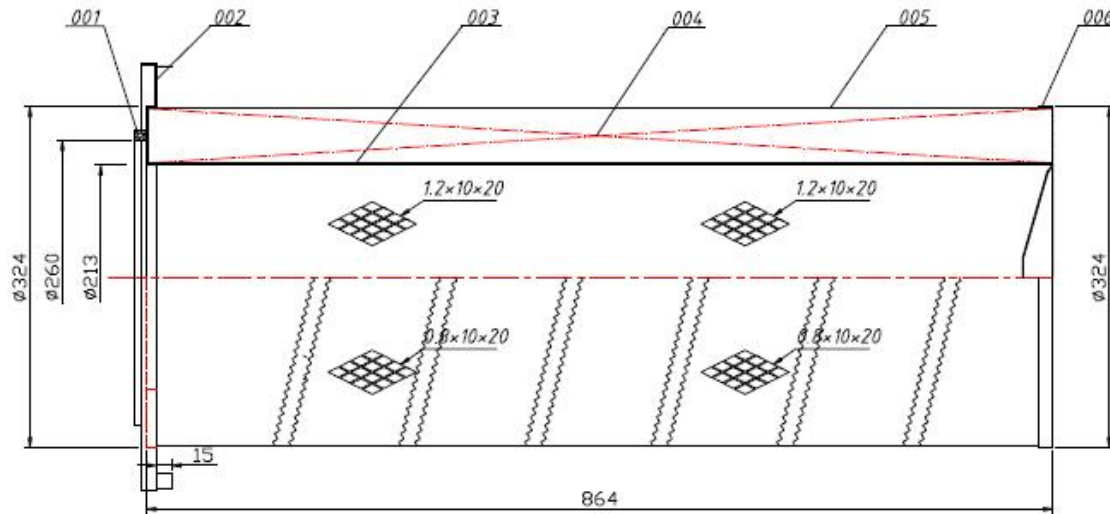
Cylindrical Cartridge Filter



Bottom end cap

NO.	Name	Qty	Material	Remark
6	Bottom end cap	1	Galvanized plate	
5	Outer cage	1	Galvanized rhombus mesh	
4	Filter media	1	Nanoweb	Filtration area 19.42m ²
3	Inner cage	1	Galvanized rhombus mesh	
2	Gasket	1	Rubber/Neoprene	
1	Top end cap	1	Galvanized plate	

Square Cap Cartridge Filter



Top end cap

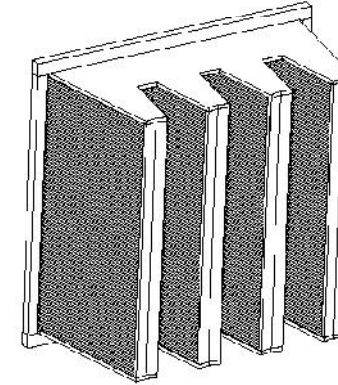
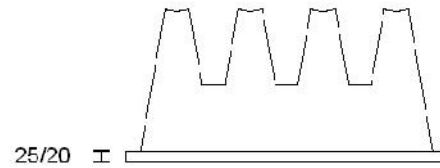
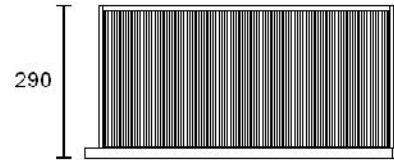
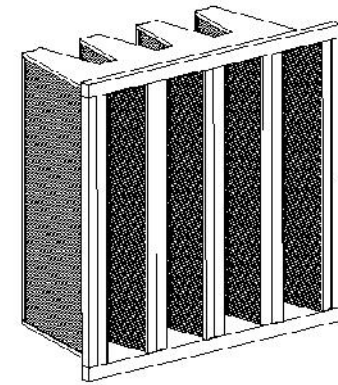


006	Bottom end cap	1	Galvanized plate	
005	Outer mesh	1	Diamond shape mesh	
004	Filter media	1	80/20	
003	Inner mesh	1	Diamond shape mesh	
002	Top end cap	1	Galvanized plate	
001	Gasket	1	Rubber/Neoprene	
NO.	Name	Qty	Material	

DELTA EcoVee

- Construction:** Synthetic - 100% Polypropylene media with EVA hotmelt spacers
 Glass Fibre - Microglass media with EVA hotmelt spacers
- Frame:** Polypropylene frame
- Adhesive:** Hotmelt Adhesive
- Market:** HVAC | Food/Beverage
 Industrial | Pharmaceutical/Cleanroom
 Suitable for all HVAC applications

Technical Details					
Nominal Dimensions(mm) = 592x290x592/490/287					
Frame size (mm) = 20/25					
T ° Max = 80° C					
Grade	Height	Area (m ²)		Flowrate	Pressure Drop
EN779	mm	Synthetic	Glass	m ³ /h	(Pa)
F5	592	14	18	3400	65
F6	592	14	18	3400	75
F7	592	14	18	3400	90
F8	592	14	18	3400	110
F9	592	14	18	3400	140
F5	490	11.5	15	2480	77
F6	490	11.5	15	2480	87.5
F7	490	11.5	15	2480	100
F8	490	11.5	15	2480	130
F9	490	11.5	15	2480	150
F5	287	8	9	1950	90
F6	287	8	9	1950	95
F7	287	8	9	1950	120
F8	287	8	9	1950	140
F9	287	8	9	1950	160



Delta Filtration

Delta EcoVee
 592x290x592/490/287
 Frame = 20/ 25

Drawn By:
 Kevin Stuart Trainor

Test Report F9

General		
Test Number:	FTD-TL-20100629-1	
Date:	29/06/2010	
Requested by:	Delta Filtration	
Device Details		
Filter Model:	RH/Z32266NW	
Media Type:	Nano Web	
Area (m ²):	21	
Dim LxWxH (mm):	320x210x660	
Test Data		
Flow Rate:	Temperature:	Rel. Humidity:
(m ³ /hr)	°C	%
1000	26.5	72
Test Aerosols:		
Efficiency:	Loading:	
DEHS	ASHRAE	
Results		
Initial Pressure Drop:	Initial Arrestance:	Initial Efficiency:
Pa	%	%
98.2	100	88.3
Final Pressure Drop:	Average Arrestance:	Average Efficiency:
Pa	%	%
450	100	96.7
Grade Achieved:		
F9		

